

Eclipse 88-SS

Stainless Steel Sampling Station for Any Climate



About the Eclipse 88-SS

- Durable all stainless steel waterway
- Secure locking cast-aluminum enclosure
- No drain or threads to prevent contamination
- Designed for use in any climate
- Fully maintainable from above ground

Getting More Specific...

- 3/8" unthreaded sample nozzle
- 3/4" FIP inlet connection
- 1/8" evacuation tube to avoid freezing (electric evacuation pump (EEP) sold separately)
- Lockable powder-coated cast-aluminum enclosure (option to cast your own logo)
- Complementary caps to protect all nozzles
- Can accommodate any bury depth in 6" increments
- Extreme cold package recommended on buries 5' or deeper



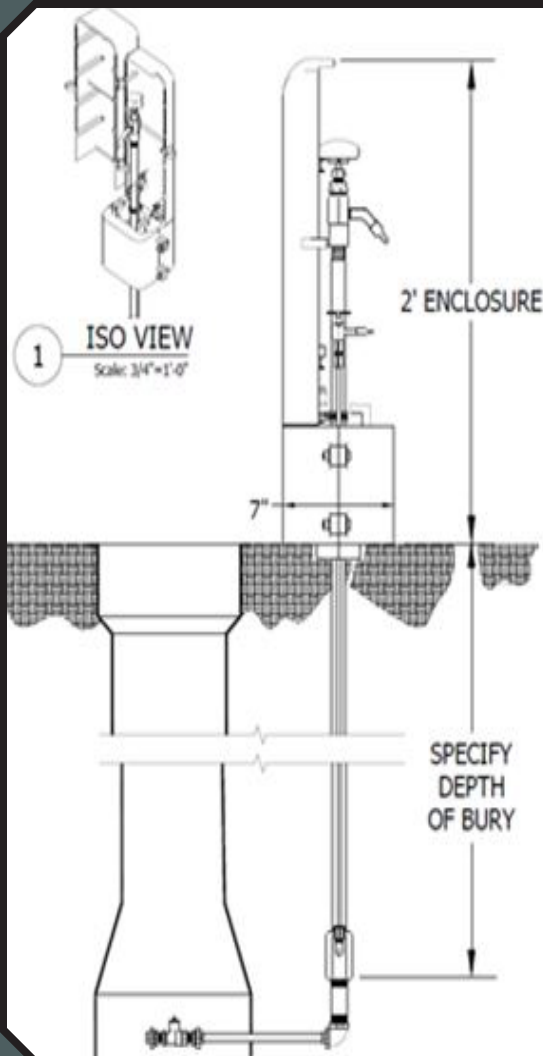
Kupferle | Saint Louis, Missouri | hydrants.com





Create Your Own Design!

Ask about custom powder coat colors, casting your utility's logo on the box, adding pedestals, and more...



88-SS Sampling Station Spec

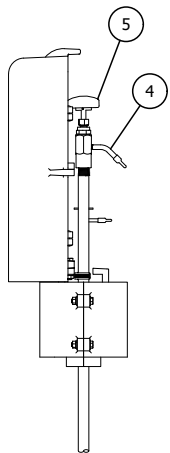
Sampling Station shall be ___' bury, with a 3/4" FIP Inlet, and 3/8" unthreaded blow-off and sampling bibb. Station shall be enclosed in a lockable, non-removable aluminum box with hinged openings. When open, the station shall require no key for operation, and all water flow will pass through an all stainless steel waterway. All working parts shall be of stainless steel serviceable from above ground with no digging needed. A stainless steel petcock will be located below the sample bibb using a 1/4" stainless steel tube to allow a pump to remove any water remaining inside the station after use to ensure non-freezing.

Don't let them freeze!

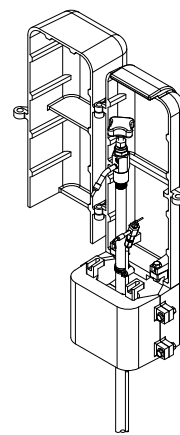
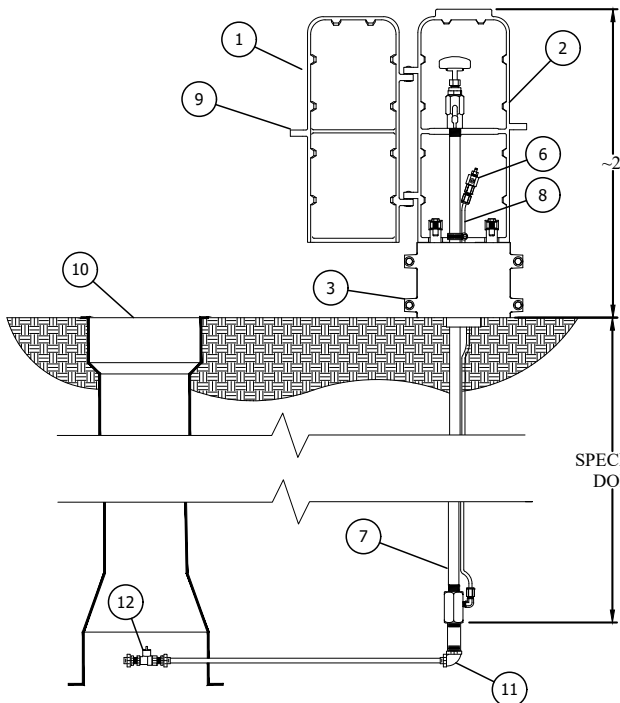
Our rechargeable battery-powered evacuation pump (EEP) keeps your stations dry and safe from freezing during cold weather



#88-SS SAMPLING STATION SPEC SHEET



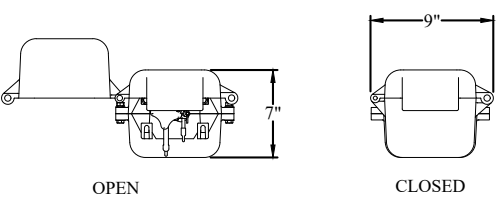
A SIDE VIEW
Scale: 3/4"=1'-0"



C ISO VIEW
Scale: 3/4"=1'-0"

GENERAL SPECIFICATIONS	
MAXIMUM OPERATING PRESSURE	220 PSI
STATION MATERIALS:	303, 316, & 18-8 STAINLESS STEEL, BUNA-N
ENCLOSURE MATERIAL:	CAST AL 319 ALUMINUM
ENCLOSURE COLOR:	GREEN
WETTED MATERIALS:	BUNA-N RUBBER, 303 & 18-8 STAINLESS STEEL
DEPTH OF BURY:	SPECIFY
WEIGHT:	~35 LBS at 3' DOB
CUSTOM LOGO:	

ITEM	DESCRIPTION	NOTES
1	88 FRONT DOOR (COVER A)	
2	88 REAR DOOR (COVER B)	
3	88 BASE	2 PIECES
4	3/8" UNTHREADED NOZZLE	
5	OPERATING HANDLE	
6	PETCOCK	
7	1/2" S.S. WATERWAY	
8	1/4" S.S TUBING	
9	LOCKING HOLE	
10	VALVE BOX	BY OTHERS
11	3/4" S.S. ELBOW	BY OTHERS
12	BALL VALVE CURBSTOP	BY OTHERS



B TOP VIEWS
Scale: 3/4"=1'-0"

1 88-SS INSTALL
Scale: 3/4"=1'-0"

Sampling Station shall be _____' bury, with a 3/4" FIP inlet, and 3/8" unthreaded blow off and sampling bibb. Station shall be enclosed in a lockable, aluminum box with hinged openings.

When open, the station shall require no key for operation, and all water flow shall pass thru an all stainless steel waterway. Seat rubber and all operational components shall be serviceable / replaceable from above ground with no digging or excavation needed.

A secondary valve (stainless steel petcock) shall be located on the evacuation line, independent of the sampling bibb and when open shall allow for evacuation of any water remaining inside the station, via pump or compressed air blow off, to prevent freezing.

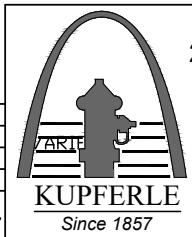
The station shall be model #88-SS as manufactured by The Kupferle Foundry, St. Louis MO. 63102 or approved equal.

- Notes:
- 1.) If the color shall be any color other than green, check with the manufacturer for color options, and specify accordingly.
 - 2.) When installed on or with concrete, Kupferle recommends the use of a gasket or barrier between the enclosure and the concrete surface. when purchasing the station, if concrete install is specified on the order Kupferle will provide said gasket. the enclosure clamp on the bottom of the enclosure base will fit inside a 4" pvc pipe.
 - 3.) Prolonged exposure to strong chlorides which can be present in concrete, cleaning agents, and sometime even potable water can lead to possible enclosure corrosion. regular maintenance and drying the station after use are the best methods for optimal station longevity.
 - 4.) In corrosive solids the buried pipe should be prepped for additional resistance to corrosion. kupferle recommends spraying all underground piping and fittings with bituminous spray tar, allowing proper time to dry, and then wrapping the parts.
 - 5.) Some sites, typically at higher pressures, turbulent flow can cause station vibration. Should this occur after installation, please contact manufacturer for remediation.

DATE	ISSUED FOR ...	STATUS / REVISION

88-SS SAMPLING STATION

	INITIALS	DATE
DRAWN	KJW	1/23/23
APPROVED	DCL	1/24/23
MODIFIED		
SHEET SIZE:	A	SCALE: 3/4"=1'-0"

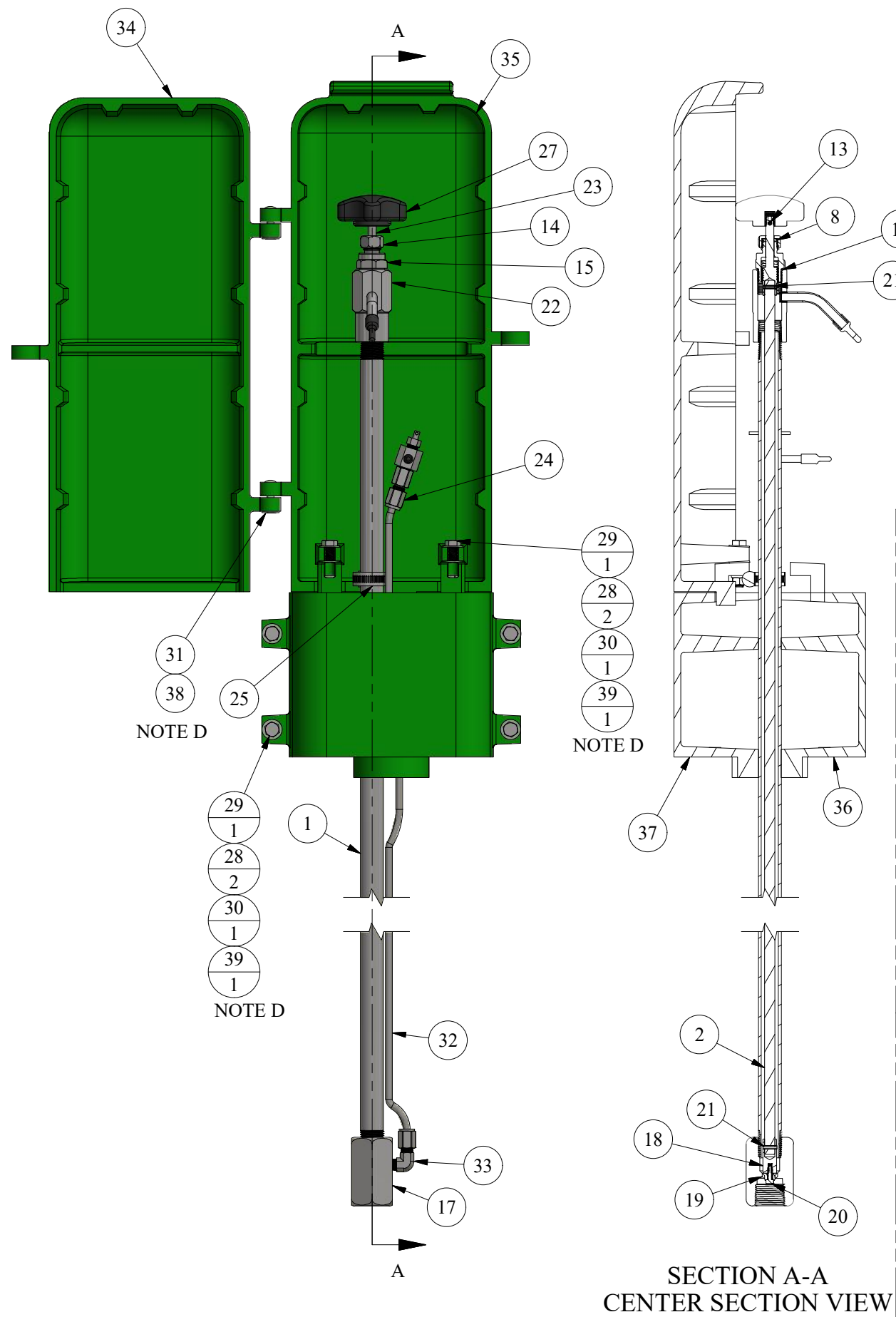


2511 NORTH 9TH STREET
ST. LOUIS, MO 63102
1-800-231-3990
FAX 314-231-2820
www.hydrants.com

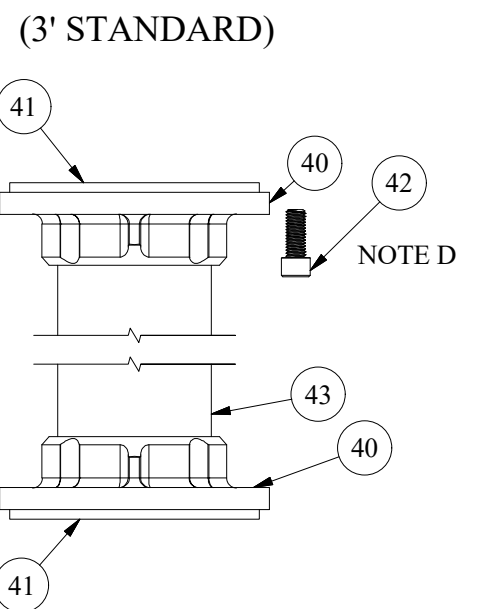
#88-SS CUT SHEET

PARTS LIST

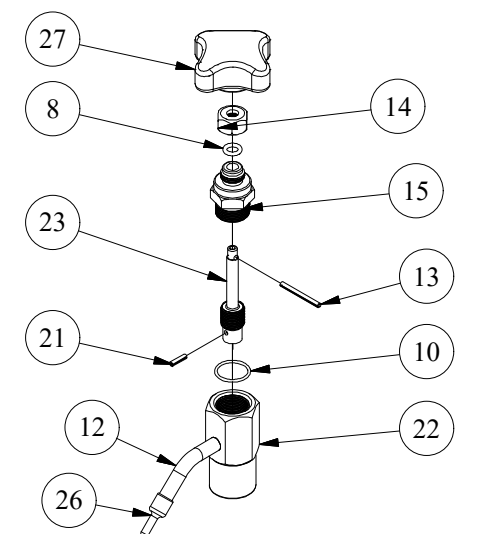
ITEM	QTY	PART NUMBER	DESCRIPTION	NOTES
1	51.000 in	1/2SSP	1/2" S.S. PIPE	B,C
2	52.750 in	3/8SSR	3/8" S.S. SOLID ROD	B,C
3	1	66S01	PETCOCK BODY	P
4	1	66S02	PETCOCK NUT	P
5	1	66S03	PETCOCK PLUNGER	P
6	1	66S04	HANDLE PIN	P
7	1	66S05	PETCOCK NOZZLE	P
8	1	66S07	O-RING (PACKING NUT)	
9	1	66S08	O-RING (PETCOCK PACKING NUT)	P
10	1	66S09	O-RING (STEM)	
11	1	66S10	O-RING (PETCOCK STEM)	P
12	1	66S06	NOZZLE (3/8")	C
13	1	66S14	HANDLE/KNOB PIN	C
14	1	66S15	PACKING NUT	
15	1	66S16	HEADSTOCK TOP NUT	
16	1	66S22	PETCOCK CAP	C
17	1	66S25	S.S. VALVE BODY	C
18	1	66S26	PLUNGER (COLD CLIMATE)	
19	1	66S27	SEAT RUBBER	C
20	1	66S28	PLUNGER SCREW	C
21	2	66S30	SPRING PIN	
22	1	66S31	HEADSTOCK (COLD CLIMATE)	
23	1	66S32	STEM (COLD CLIMATE)	
24	1	66S33	1/4" COMP. x 1/8" FIP S.S. FITTING	C
25	1	66S34	HOSE CLAMP	
26	1	94-K	PLASTIC NOZZLE CAP	C
27	1	66S42	KNOB	C
28	12	88-14	ENCLOSURE WASHER	
29	6	88-4	ENCLOSURE BOLT	
30	6	88-5	ENCLOSURE HEX NUT	
31	2	88-6	RIVET FOR 88 COVER	C
32	43.983 in	88-7-SS	1/4" S.S. TUBING	B,C
33	1	88-8-SS	1/4" COMP. x 1/8" MIP ELBOW S.S.	C
34	1	88-A	"NEW STYLE" 88 COVER "A"	C,R
35	1	88-B	"NEW STLE" 88 COVER "B"	C,R
36	1	88-C1	"NEW STYLE" 88 BASE	C,R
37	1	88-C2	"NEW STYLE" 88 BASE	C,R
38	2	9419	RIVET WASHER	
39	6	9465	ENCLOSURE LOCK WASHER	
OPTIONS / REPAIR PARTS ONLY				
40	0	678	COUPLING FOR 88 PEDESTAL	C
41	0	88-22	88 ENCLOSURE GASKET	
42	0	88-23	88 PEDESTAL BOLT	C
43	0	4FBE	PEDESTAL PIPE - 2.8FT	
44	0	88-A-LOGO	"NEW STYLE" 88 COVER "A" WITH LOGO	A,C,R
45	0	88P-1S	SMALL PUMP	A,C
46	0	Z88PS	LARGE PUMP	A,C
47	0	66S12	1/2" NOZZLE (OLD STYLE)	C
48	1	66S35	NOZZLE CAP (1/2" OLD STYLE)	C



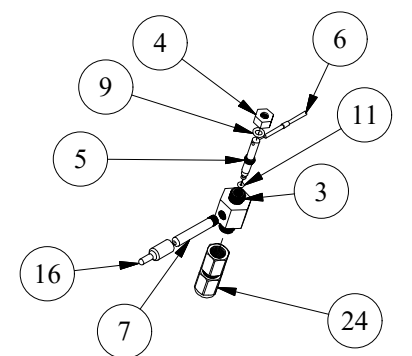
OPTIONAL PEDESTAL



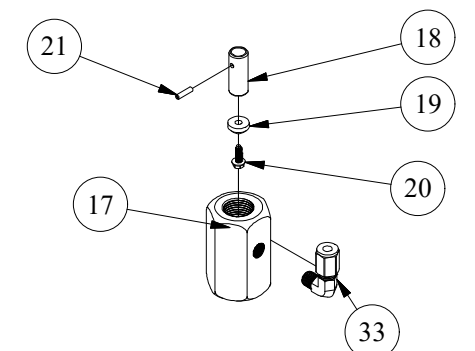
HEADSTOCK ASSEMBLY



PETCOCK ASSEMBLY



VALVE ASSEMBLY



REPAIR KITS

PART NUMBER	DESCRIPTION	PARTS INCLUDED
X66-CCHEADSTOCK	HEADSTOCK ASSEMBLY COMPLETE	66S31 HEADSTOCK (1), 66S06 NOZZLE (1), 94K CAP (1)
X66-CC SCREW	COLD CLIMATE TOP SCREW ASSEMBLY	66S42 KNOB (1), 66S14 ROD PIN (1), 66S32 STEM (1), 66S15 PACKING NUT (1), 66S07 PACKING NUT O-RING (1), 66S16 TOP NUT (1), 66S09 STEM O-RING (1)
X66-PETCOCK	S.S. PETCOCK ASSEMBLY	66S01 BODY (1), 66S08 NUT O-RING (1), 66S02 NUT (1), 66S03 PLUNGER (1), 66S10 PLUNGER O-RING (1), 66S04 PIN (1), 66S05 NOZZLE (1), 66S22 CAP (1)
X66-PLUNGER	#66 PLUNGER ASSEMBLY	66S26 PLUNGER (1), 66S27 SEAT RUBBER (1), 66S28 PLUNGER SCREW (1)
X66RK	88-SS REPAIR KIT	66S27 SEAT RUBBER (1), 66S28 SCREW (1)
X881	ALUMINUM COVER COMPLETE	88-A FRONT COVER (1), 88-B BACK COVER (1), 88-6-AL RIVETS (2), 9419 FLAT WASHER (2)
X882	ALUMINUM BASE COMPLETE	88-C BASE (2), 88-4 BOLT (4), 9465-88 LOCK WASHER (4), 88-5 NUT (4)
X883	ALUMINUM COVER AND BASE COMPLETE	88-A FRONT COVER (1), 88-B BACK COVER (1), 88-C1 BASE (1), 88-C2 BASE (1), 88-4 BOLT (6), 9465-88 LOCKWASHER (6), 88-5 NUT (6), 88-14 WASHER (12), 9419 FLAT WASHER (2), 88-6 RIVET (2)
X88-36P	3' PEDESTAL COMPLETE	678 COUPLING (2), 4FBE PIPE (1), 88-22 GASKET (1), 88-23 BOLT (4), 9400A-38 BOLT (4), 9458 WASHER (4), 345-N NUT (4)

NOTE	DESCRIPTION
A	NOT SHOWN
B	PIPE LENGTH DEPENDENT ON DEPTH OF BURY, SHOWN AS 3'
C	SOLD AS REPLACEMENT PART
D	BOLT ASSEMBLY USED ON ALL SIMILAR HOLES/BRACKETS
P	SEE PETCOCK ASSEMBLY FOR PARTS INFORMATION
Q	REPLACEMENT NOZZLE REQUIRES BENDING IN THE FIELD AFTER INSTALLATION
R	POWDER COATING OPTIONS AVAILABLE

DISCLAIMER
THIS DRAWING IS THE PROPERTY OF THE KUPFERLE FOUNDRY COMPANY. IT IS NOT TO BE USED OR DUPLICATED WITHOUT THE PERMISSION OF THE OWNER.

LEGEND

(X)	STANDARD TAG
(X/Y)	TAG WITH Y QUANTITY

DRAWN	7/7/2017
SMS CHECKED	
DCL MODIFIED	9/12/2017
ADC	8/18/2022
SIZE	SCALE
C	1 / 5
DWG NO	#88-SS



2511 NORTH 9TH ST.
ST. LOUIS, MO 63102
1-800-231-3990

SHEET	REV
1 OF 1	2